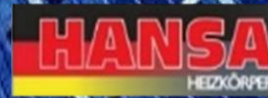




PRICE LIST
JANUARY 2022

JANUARY 2022



WITH RESPECT TO HUMAN AND
THE ENVIRONMENT



SOLAR WATER HEATERS

Solar water heaters of SUNTECH afford:

- Maximum operating pressure 10bar
- Collector frame from especially designed cast aluminum profile
- The absorber is composed of a full face copper sheet with blue super selective titanium coating (selective aluminium or non-selective aluminium absorbers are also available) and is welded to the copper pipes by ultrasonic or laser welding.
- Special EPDM rubber profile ensures 100% water and vapor sealing.
- Boiler with external cover made from laminated steel RAL 9006
- The tank is made of 2,5 mm low carbon steel with a double "enamelling" coating (glass)
- Backup electric heater 4KW with safety thermostat
- The thermostat with thermal cut out safety feature regulates the desired temperature of the hot water, with precision.
- Galvanized roof base

SunTech

SOLAR WATER HEATERS STANDARD AND EXTRA HEAT EXCHANGER

DESCRIPTION	BOILER (lt)	QUANTITY COLLECTORS	DIMENSIONS (m ²)	STANDARD BOILERS PRICE WITHOUT VAT	EXTRA HEAT EXCHANGER PRICE WITHOUT VAT
120 / 1 / 200	120	1	2 m ²	870 €	990 €
150 / 1 / 200	150	1	2 m ²	890 €	1.010 €
150 / 1 / 240	150	1	2,4 m ²	950 €	1.070 €
160 / 1 / 240	160	1	2,4 m ²	980 €	1.100 €
160 / 2 / 150	160	2	2 x 1,5 m ²	1.160 €	1.280 €
200 / 1 / 240	200	1	2,4 m ²	1.050 €	1.170 €
200 / 2 / 150	200	2	2 x 1,5 m ²	1.185 €	1.305 €
200 / 2 / 200	200	2	2 x 2 m ²	1.330 €	1.450 €
300 / 2 / 200	300	2	2 x 2 m ²	1.550 €	1.670 €
300 / 2 / 240	300	2	2 x 2,4 m ²	1.780 €	1.900 €

The standard energy boiler includes solar heat exchanger and backup electric heater.
Boiler with extra heat exchanger includes solar heat exchanger, backup electric heater and external heat source.



BOILER STANDARD AND EXTRA HEAT EXCHANGER



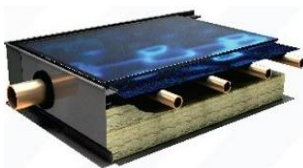
- External cover made of laminated steel RAL9006
- The tank is made of 2,5 mm low carbon steel with a double “enamelling” coating (glass)
- Oven-treated at 860°C, achieving maximum strength and durability according to DIN 4753
- Closed circuit double jacket is made of 2.0 mm thick of mild steel
- Insulation from ecological expanded polyurethane 50mm thick
- The pure magnesium anode Ø22mm effectively protects the cylinder from electrolysis
- Backup electric heater 4KW with safety thermostat
- The thermostat with thermal cut out safety feature regulates the desired temperature of the hot water, with precision

BOILER (lt)	STANDARD BOILER PRICE WITHOUT VAT	EXTRA HEAT EXCHANGER PRICE WITHOUT VAT
120 lt	570 €	690 €
150 lt	610 €	730 €
160 lt	635 €	755 €
200 lt	665 €	785 €
300 lt	1.000 €	1.120 €



The standard energy boiler includes solar heat exchanger and backup electric heater.
Boiler with extra heat exchanger includes solar heat exchanger, backup electric heater and external heat source.

SOLAR COLLECTORS



- Collector frame from especially designed cast aluminum profile, without seams, screws, to succeed absolute tightness.
- The absorber is composed of a full face copper sheet with blue super selective titanium coating (selective aluminium or non-selective aluminium absorbers are also available) and is welded to the copper pipes by ultrasonic or laser welding and incredibly high performance even in the worst weather conditions.
- Strongly insulation with 50mm thick of rockwool at the back and 20mm thick at the side walls of collector that minimize the energy loss and ensure to achieve high efficiency.
- Safety glass and low iron content 3,2mm with 88,5% transmission.
- Special EPDM rubber profile ensures 100% water and vapor sealing.

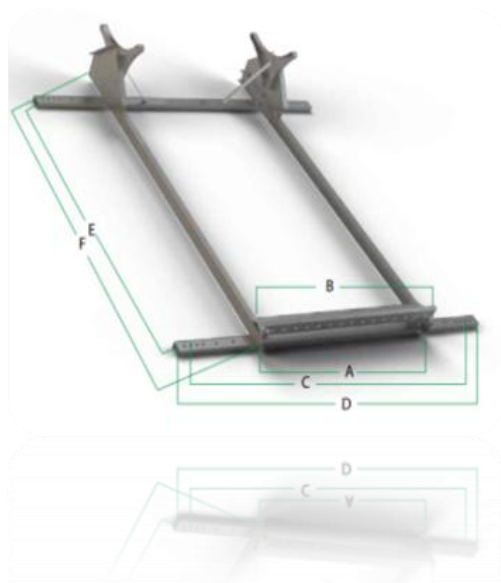
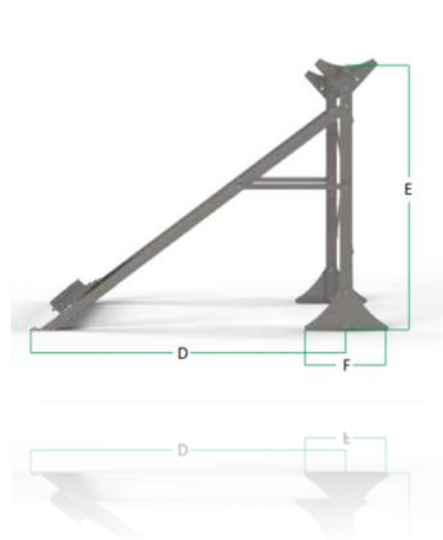


RATED COLLECTOR SURFACE	DIMENSIONS (mm) HxLxW	PRICE WITHOUT VAT
1,5 m ²	1500x1000x80	280 €
2,0 m ²	2000x1000x80	345 €
2,4 m ²	2000x1200x80	410 €

SOLAR BASES

ROOF BASES

BOILER (lt)	QUANTITY OF COLLECTORS	SURFACE (m ²)	PRICE WITHOUT VAT
120 – 150 – 160 – 200	1	2 m ² ή 2,4 m ²	90 €
160 – 200	2	1,5 m ²	95 €
200 – 300	2	2 m ² ή 2,4 m ²	100 €



TILE ROOF BASES

QUANTITY OF COLLECTORS	DIMENSIONS (m ²)	PRICE WITHOUT VAT
1	2 m ² ή 2,4 m ²	140 €
2	1,5 m ² ή 2 m ² ή 2,4 m ²	160 €

CONNECTION ACCESSORIES

DESCRIPTION	PRICE WITHOUT VAT
CONNECTION SET TO BOILER WITH 1 COLLECTOR	88 €
CONNECTION SET TO BOILER WITH 2 COLLECTORS	100 €



EXPANSION TANKS – PRESSURE TANKS – TANKS FOR SOLAR



- Maximum operating pressure: 10 bar
- Operating temperature: -10°C έως +100°C
- Membrane to be replaced
- Expansion tanks membrane material: EPDM
- Pressure tanks and tanks for solar membrane material: BUTYL
- With mark CE based on PED 97/23/CE



EXPANSION TANKS

DESCRIPTION	Diameter (mm)	Height (mm)	Connection (inch)	PRICE WITHOUT VAT
8lt	270	200	3/4"	37 €
12lt	280	280	3/4"	43 €
18lt	265	395	3/4"	47 €
25lt	260	435	3/4"	48 €
35lt with feet	370	460	3/4"	88 €
50lt with feet	390	600	3/4"	98 €
80lt with feet	380	670	3/4"	147 €
105lt with feet	440	670	3/4"	180 €
150lt with feet	500	1080	1"	280 €
250lt with feet	580	1080	1 1/2"	667 €
300lt with feet	640	1080	1 1/2"	800 €



PRESSURE TANKS

DESCRIPTION	PRICE WITHOUT VAT
PRESSURE 24LT WINDBAG	65 €
PRESSURE 35LT VERTICAL	81 €
PRESSURE 60LT VERTICAL	136 €
PRESSURE 80LT VERTICAL	178 €
PRESSURE 100LT VERTICAL	189 €
PRESSURE 24LT HORIZONTAL	68 €
PRESSURE 35LT HORIZONTAL	87 €
PRESSURE 60LT HORIZONTAL	140 €
PRESSURE 80LT HORIZONTAL	185 €
PRESSURE 100LT HORIZONTAL	196 €



TANKS FOR SOLAR

DESCRIPTION	PRICE WITHOUT VAT
TANK 8LT	43 €
TANK 12LT	50 €
TANK 18LT	53 €
TANK 24LT	60 €



INSTALLATION COMPONENTS AND INSTRUMENTS



Wide range of HANSA accessories are needed for boiler rooms and plumbing installations.

Air ventilators

DESCRIPTION	PRICE WITHOUT VAT
AIR VENTILATOR 1/2 HEAVY TYPE WITH 1 VENTILATOR CHROME	8,75 €
AIR VENTILATOR 1/2 HEAVY TYPE WITH 2 VENTILATORS CHROME	12,25 €



Safety valves

DESCRIPTION	PRICE WITHOUT VAT
TEMPERATURE PRESSURE VALVE FOR WOODBOILER CHROME	28 €
SAFETY VALVE 1/2" 3,4 BAR CHROME HEAVY TYPE	7 €
SAFETY VALVE 1/2" 6,8,10 BAR CHROME HEAVY TYPE	9 €
SAFETY VALVE 3/4" 3,4,6 BAR CHROME HEAVY TYPE	12 €
SAFETY VALVE 1" 3,4 BAR CHROME HEAVY TYPE	19 €



Thermostats

DESCRIPTION	PRICE WITHOUT VAT
CONTACT SINGLE HEATING 30°C έως 90°C	19 €
BAPTISM SINGLE HEATING 30°C έως 90°C	24 €



Diesel fuel filters

DESCRIPTION	PRICE WITHOUT VAT
DIESEL FUEL FILTER 3/8" PLASTIC	8 €
DIESEL FUEL FILTER 1/2" PLASTIC	18 €
DIESEL FUEL FILTER 3/8" ALUMINUM	10 €
DIESEL FUEL FILTER 1/2" ALUMINUM	20 €
DIESEL FUEL FILTER 1/2" with WATER TRAP	37 €
DIESEL FUEL FILTER 1/2" HEATED	88 €



Manometers - Thermometers

DESCRIPTION	PRICE WITHOUT VAT
THERMOMANOMETER Ø80 AXIAL	19 €
THERMOMANOMETER Ø80 RADIAL	21 €
THERMOMETER Ø63 AXIAL 20°C - 120°C	11 €
THERMOMETER VERTICAL 20 °C - 120°C	28 €
THERMOMETER ANGLE 20 °C - 120°C	31 €
MANOMETER AXIAL 6,10,16,25 BAR	5 €
MANOMETER RADIAL 6,10,16,25 BAR	5 €
MANOMETER GLYCERINE 16,25 BAR	14 €



Auto Filling Valve – Flow Switch

DESCRIPTION	PRICE WITHOUT VAT
AUTO FILLING VALVE HANSA CHROME WITH MANOMETER AND 2 FITTINGS 1/2" ḡ 3/4" INPUT-OUTPUT HEAVY TYPE	49 €
FLOW SWITCH 1"	65 €

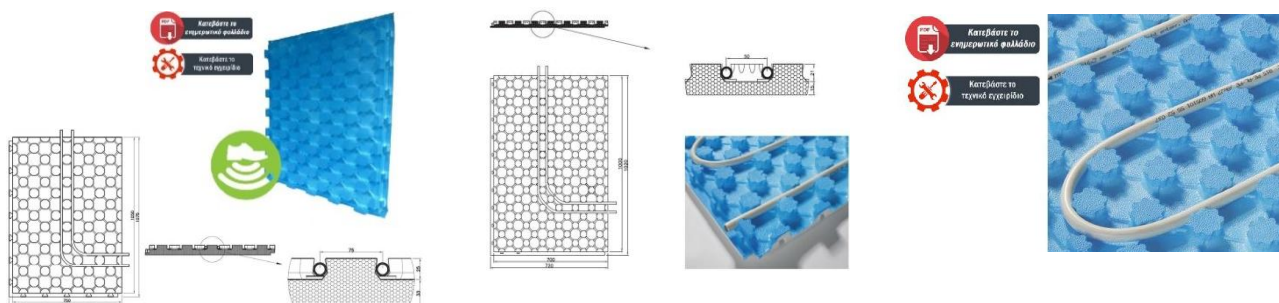


STIROTERMAL SILENT **STIROTERMAL ADAPT** **FRAGMAT** 

Stirotermal Silent is a panel, which in addition to proper thermal insulation also provides insulation from impact sound, the level of sound is reduced by 26 db. Made of polystyrene, coated with wax and with blue polyethylene film. It has octagonal and conical buttons, which allow easy installation of pipes with diameter 16-20 mm in intervals of at least 7,5 cm. The locking system allows the joints to be fixed firmly. It is suitable for installation under cement in homes and offices, where sound insulation is required.

STIROTERMAL ADAPT is thermal insulation board made of expanded polystyrene (EPS) with PE sheet (steam boiler). Does not contain freon (CFC free / FCKW frei). STIROTERMAL ADAPT meets the requirements of model HRN EN 13163.- Format: 1000 x 700 x dN [mm] - Processing: flat edges - Temperature resistance (long term): 80 ° C

Characteristics	Stirotermal Silent	Stirotermal Adapt
Pipe diameter	18-20mm	14-16mm
Pipe distance	75-150-230mm	50-100-150mm
Insulation material	EPS	EPS
Model construction	EPS - EN 13163-L(3)- W(3)-T(1)-S(5)- P(10)-BS50-CP3-DS(N)5-DS(70,-)3-SD30	EPS-EN 13163-T1- LT-W1-S1-P3-CS(10)100-DS(N)5-BS(70.-)2
Model fire safety EN 13501-1	E	
Model fire safety DIN 4102	B1	
Useful dimension	1050 x 750 mm	1000x700 mm
Useful surface	0,7875 m ²	0,7 m ²
Total dimension	1075 x 775 mm	1025 x 720 mm
Total thickness	55mm	36mm
Insulation thickness	33mm	15mm
Thermal resistance (Rp)	0,85 m ² k/w	0,40 m ² k/w
Coefficient of thermal conductivity (ρλ)	0,038W(m.K)	0,035W(m.K)
Coating sheet	PE	
Coating sheet thickness	0,18 mm	
Coating sheet color	Light blue	
Packing	10 sheets (8 m ²)	18 sheets (12,6 m ²)
Sound Capacity against EN- 13501-1	YES	NO
CODE	CY0993S	CY0993G
PRICE/m ² WITHOUT VAT	23,00 €	20,00 €



ACCESSORIES UNDERFLOOR HEATING

• Perimeter insulation tape for underfloor heating

DESCRIPTION	CODE	PRICE without VAT
Perimeter insulation tape	PX313460	140 €



Perimeter insulation tape suitable for floor heating with height 150mm and thickness 6mm at rolls 60m

• Plastic clip for holding underfloor heating pipe



DESCRIPTION	CODE	PRICE without VAT
Clip	CY0993 A	20 €

Dimensions 30*50*4 mm at package of 100 pieces

• Large range superfluidizer for thermoconcrete SIKAMENT 150S

Mixed action admixture. Acts as a fluidizer at a low dose and as a superfluidizer at a higher dose.

Dosage:

0,2-0,6% / m³ concrete as fluidizer

0,6-1,2%/m³ concrete as superfluidizer

Ph-11,5(+20°C)

Packaging: Plastic container 20lt

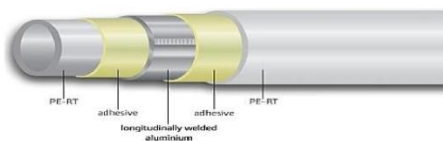


Κατεβάστε το τεχνικό εγχειρίδιο



DESCRIPTION	CODE	PRICE without VAT
Fluidizer SIKAMENT 150S	FLU	143 €
Glass fibres 600gr 12mm		12,5 €/pcs

• Multilayer pipe



DESCRIPTION	DIAMETER (mm)	LENGTH (m)	PRICE/m Without VAT
MULTILAYER PIPE PEX-AL-PEX (simple)	16*2	200m/100m	2,57€

ACCESSORIES UNDERFLOOR HEATING

• Stainless steel distributors for underfloor heating with flow meters (Series FRTS1)

Specifications:

Stainless steel distributors made in GERMANY construction material 1.4301 (X5CrNi/8-10) 1¼, according to standard EN 10088-2, with integrated nozzles 24*19 (supply/return) and flow meters 0-5lt/min.

Supplied with:

Adjustable/Safety supply heads

[Possibility of placing electrothermal motors in the positions of the return heads]

- 2 caps 1 ¼"
- 2 system drain valves
- 2 mechanical ventilators ½"
- 1 set of wall brackets



NUMBER OF NOZZLES	CODE	LENGTH (mm)	PRICE without VAT
2+2		265	139€
3+3		300	170€
4+4	F807575	350	200 €
5+5	F807582	400	232 €
6+6	F807599	460	264 €
7+7	F807605	515	295 €
8+8	F807612	565	326 €
9+9	F807629	615	358 €
10+10	F807636	665	389 €
11+11	F807643	715	422 €
12+12	F807650	765	452€

• Hydraulic fitting distributors for pipe



SIZE	CODE	PRICE without VAT
18*2	F807544	3,30 €
16*2	F807551	2,70 €
16*2,25	F807568	2,70 €



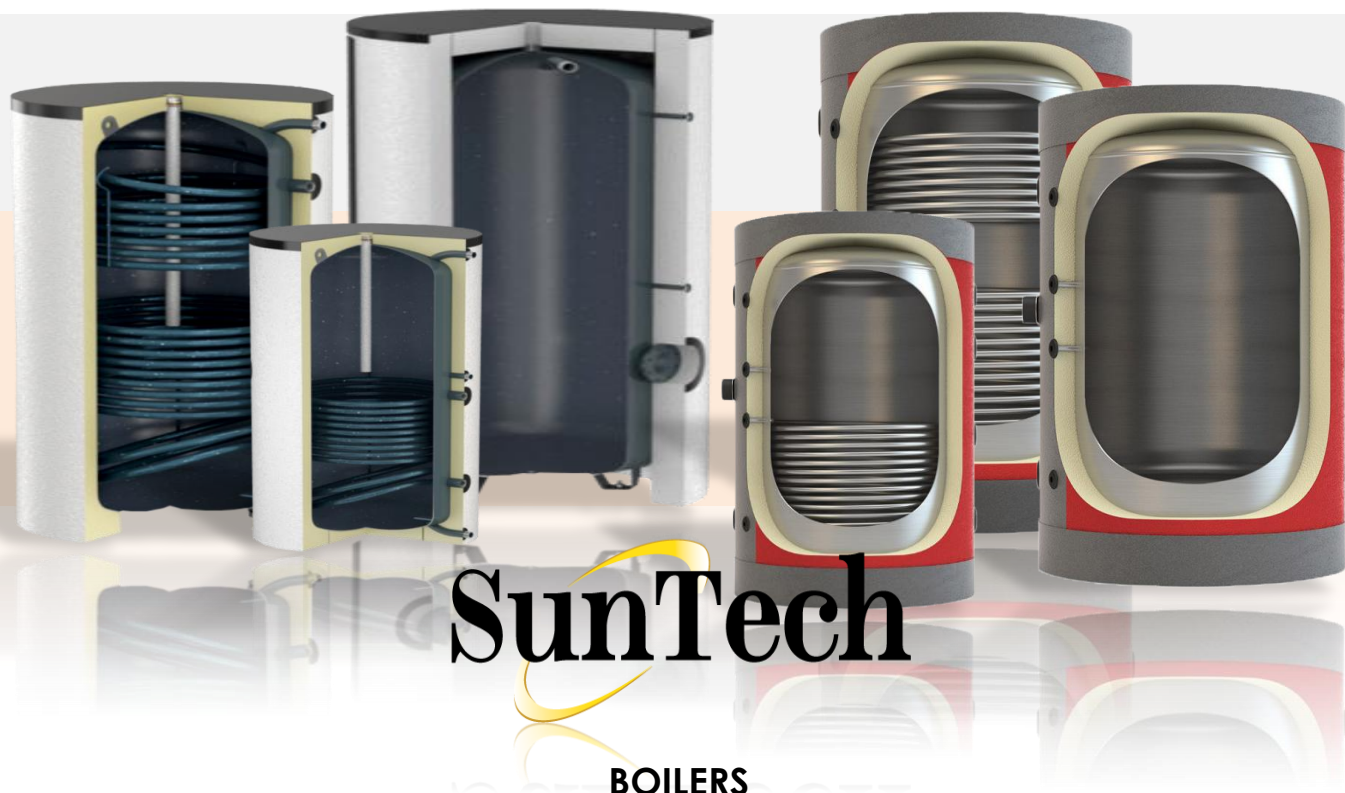
- PEX (16*2, 16*2,2,(18*2,20*2mm)
- MULTILAYER (16*2,25mm)
- COPPER (15mm)

• Connection for union between two contributors



DESCRIPTION	PRICE without VAT
Connection (Brass)	9,50 €

DHW STORAGE BOILERS AND BUFFER TANKS



BOILERS

DHW (Domestic Hot Water) **boilers** of SUNTECH, the water in the tank is that comes from central water supply and we can use it for all our activities.

Manufactured according to European standards and available in capacities from 150lt to 1000lt. They have up to 2 spiral heat exchangers, which through convection heat transfer, heat the water internally of boiler. At the heat exchangers we can connect, depending on configuration, with solar collectors, burner (diesel, pellet, wood, gas etc.), heat pump, buffer tanks and general devices that have closed water heating circuits. The boiler has also disposed sockets for sensor temperature, electrical resistance and thermometer.

DESCRIPTION	PRICE WITHOUT VAT
BOILER IN ROOM 150L-0	598,50 €
BOILER IN ROOM 200L-0	707 €
BOILER IN ROOM 300L-0	843 €
BOILER IN ROOM 500L-0	1.197 €
BOILER IN ROOM 750L-0	2.012,50 €
BOILER IN ROOM 1000L-0	2.296 €
BOILER IN ROOM 1500L-0	3.675 €
BOILER IN ROOM 2000L-0	4.480 €
BOILER IN ROOM 2500L-0	5.696 €
BOILER IN ROOM 3000L-0	6.912 €



**WITHOUT
HEAT EXCHANGER**

Note: Boilers include electrical resistance

DESCRIPTION	PRICE WITHOUT VAT
BOILER IN ROOM 150L-1	794,50 €
BOILER IN ROOM 200L-1	885,50 €
BOILER IN ROOM 300L-1	1.169 €
BOILER IN ROOM 500L-1	1.498 €
BOILER IN ROOM 750L-1	2.310 €
BOILER IN ROOM 1000L-1	2.576 €
BOILER IN ROOM 1500L-1	4.235 €
BOILER IN ROOM 2000L-1	5.040 €
BOILER IN ROOM 2500L-1	6.256 €
BOILER IN ROOM 3000L-1	7.472 €

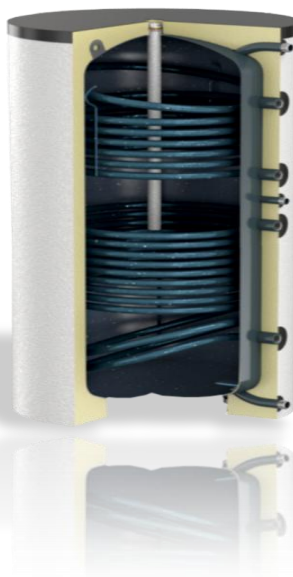
Note: Boilers include electrical resistance



**STANDARD
BOILER
(WITH 1 HEAT
EXCHANGER)**

DESCRIPTION	PRICE WITHOUT VAT
BOILER IN ROOM 150L-2	871,50 €
BOILER IN ROOM 200L-2	969,50 €
BOILER IN ROOM 300L-2	1.284,50 €
BOILER IN ROOM 500L-2	1.652 €
BOILER IN ROOM 750L-2	2.576 €
BOILER IN ROOM 1000L-2	2.824,50 €
BOILER IN ROOM 1500L-2	4.815 €
BOILER IN ROOM 2000L-2	5.620 €
BOILER IN ROOM 2500L-2	6.836 €
BOILER IN ROOM 3000L-2	8.032 €

Note: Boilers include electrical resistance



**EXTRA HEAT
EXCHANGER
(WITH 2 HEAT
EXCHANGERS)**

BUFFER TANKS FOR EXTERNAL INSTALLATION



Buffer tanks of SUNTECH for cooling and heating in capacities from 40lt to 120lt

SPECIFICATIONS:

- Internal galvanized sheet metal
- Position for 2 sensors
- Polyutherane insulation 5cm
- Position for resistance
- Metal adjustable legs
- Sockets 1 ¼"
- Outer metal housing suitable for outdoor installation

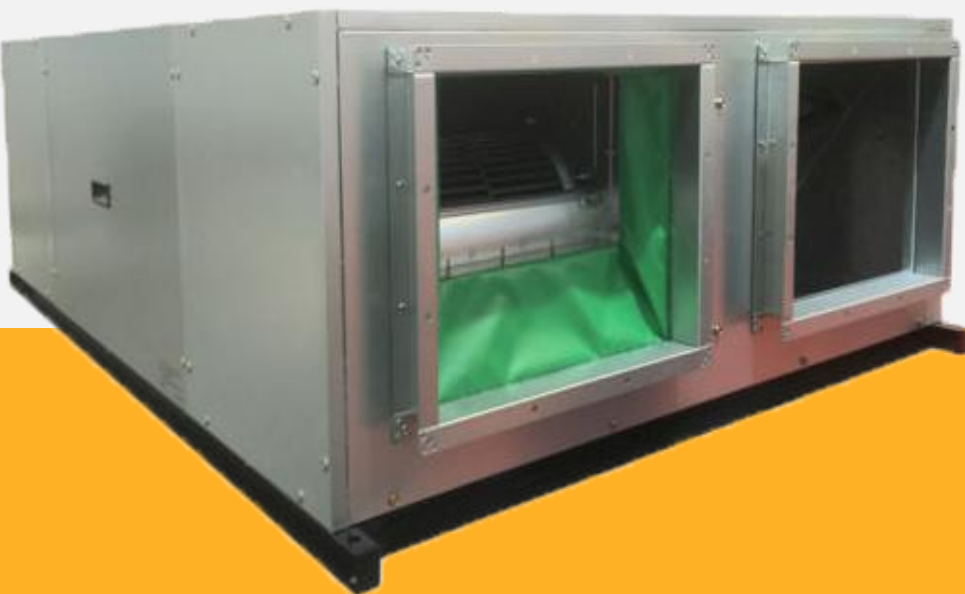
DESCRIPTION	PRICE WITHOUT VAT
Buffer tank 40lt	319 €
Buffer tank 60lt	345 €
Buffer tank 80lt	399 €
Buffer tank 100lt	465 €
Buffer tank 120lt	532 €

The SunTech logo features the brand name in a bold, black serif font. A stylized yellow and orange swoosh curves around the top of the letters 'u' and 'n'.



ENERGY RECOVERY VENTILATION

HOLTOP



HOLTOP



Series TH with airflow from 150-1.300 m³/h. Succeeded heat or energy recovery.

Included:

- Quiet operation
 - By-pass function,
 - Double filters and notification to change them.
- Finally they are easily installed to ceiling (suspended type) and have low noise level.

TH SERIES

		XHBQ-D2TH	XHBQ-D3TH	XHBQ-D4TH	XHBQ-D6TH	XHBQ-D8TH	XHBQ-D10TH	XHBQ-D13TH	
Volt.	V	220							
Airflow	m ³ /h	L	150	250	350	500	700	900	1000
		M	200	300	400	600	800	1000	1300
		H	200	300	400	600	800	1000	1300
External pressure	Pa	L	60	75	80	89	92	80	75
		M	70	82	85	92	96	85	85
		H	75	85	88	97	100	86	90
Enthalpy efficiency (SUMMER)	%	L	60	62	62	63	57	60	58
		M	55	57	57	59	55	58	56
		H	55	57	57	59	55	58	56
Enthalpy efficiency (WINTER)	%	L	63	65	65	67	63	64	62
		M	59	61	60	61	57	62	59
		H	59	61	60	61	57	62	59
Temperature efficiency	%	L	75	73	75	76	74	76	76
		M	70	68	69	70	68	70	70
		H	70	68	69	70	68	70	70
Noise	dB(A)	L	25	27	31	29	34	34	38
		M	30	34	37	35	39	38	41
		H	31,5	34,5	37,5	39	41	42	43
Dimensions	mm	L	666	744	744	824	1116	1116	1129
		W	580	599	804	904	884	1134	1216
		H	264	270	270	270	388	678	388
Net weight	Kg	23	25	31	36	60	70	79	
PRICE Without VAT		1.184€	1.263€	1.536€	1.800€	2.653€	2.900€	3.159€	

Price (without VAT) standard intelligent control panel: 200€

Price (without VAT) touch screen intelligent control panel: 360€



NEW

Series TG with airflow from 1.500-3.000 m³/h.
Succeeded heat or energy recovery.

Included:

- Double filters
- Double layer of insulation PU 20mm, as result the low noise level.
- They have improved design with higher external pressure and innovative access place design

Both suspended and floor installation available.



GXA SERIES

XHBQ-D15GXA	XHBX-D20GXA	XHBX-D25GXA	XHBX-D30GXA
-------------	-------------	-------------	-------------

Volt.	V	220				
Airflow	m ³ /h	L	1000	1200	2000	2500
		M	1500	2000	2500	3000
		H	1500	2000	2500	3000
External pressure	Pa	L	84	110	140	150
		M	135	132	170	180
		H	163	176	200	210
Enthalpy efficiency (SUMMER)	%	L	69	65	64	63
		M	66	62	61	60
		H	66	62	61	60
Enthalpy efficiency (WINTER)	%	L	74	73	72	71
		M	70	71	70	69
		H	70	71	70	69
Temperature efficiency	%	L	74	74	73	73
		M	71	71	70	70
		H	71	71	70	70
Noise	dB(A)	L	49	49	50	51
		M	51	51	52	54
		H	53	53	55	57
Dimensions	Mm	M	1426	1426	1700	1800
		Π	1200	1200	1400	1500
		Y	510	510	590	660
Net Weight	Kg		110	112	130	142
PRICE Without VAT			4.503 €	4.752 €	5.980 €	7.254 €

Price (without VAT) standard intelligent control panel: 200€

Price (without VAT) touch screen intelligent control panel: 360€

Optional CO₂ sensor : 360€ (connect to BOTH intelligent control panel)

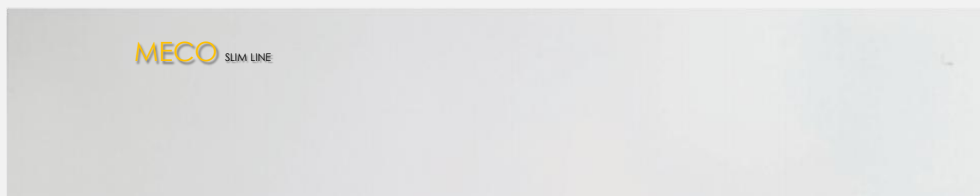
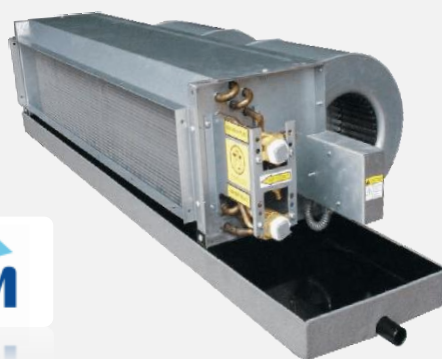
Optional humidity sensor: 100€ (ONLY connect to touch screen intelligent control panel)



HOLTOP

FAN COILS

KYBOM - MECO SLIM LINE - UNICO SLIM LINE





Fan coils wall mounted type

	FCU51 BM	FCU68 BM	FCU85 BM	FCU102 BM	FP136 BM
Capacity (Cooling - Heating) : (kW)	2,7 / 4,5	3,6 / 5,4	4,5 / 6,75	5,3 / 9,7	7,2 / 10,8
Power supply : V / ph. / Hz	220/1/50				
Max air flow : (m3 / h)	510	680	850	1020	1360
Fan power (30Pa) : (W)	55	68	87	108	142
Max Noise : dB (A)	39	41	43	45	46
Length : (mm)	850	970	970	1100	1100
Width : (mm)	300	315	315	330	330
Height : (mm)	198	235	235	235	235
Weight : (kg)	11,2	14,5	14,5	16,5	16,5
PRICE WITHOUT VAT :	455 €	499 €	592 €	661 €	704 €

(1) Cooling measurement conditions: Air inlet temperature (DB) 27 °C / WB 19,5 °C, inlet/outlet cold water temperature 7 °C / 12 °C

(2) Heating measurement conditions: Air inlet temperature (DB) 21 °C, inlet hot water temperature 60 °C



Fan coil vertical exposed type

	FCU-34-LM	FCU-51-LM	FCU-68-LM	FCU-85-LM	FCU-102-LM	FCU-136-LM	FCU-170-LM	FCU-204-LM	FCU-238-LM
Capacity (Cooling - Heating) : (kW)	2,17 / 3,6	2,95 / 5,04	4,09 / 7,03	4,7 / 7,87	5,58 / 9,42	7,37 / 12,6	9,7 / 16,2	11,29 / 18,03	12,49 / 19,7
Power supply : V / Hz	220 / 1 / 50								
Max air flow : (m3 / h)	340	510	680	850	1 020	1 360	1 700	2 040	2 380
Fan power (30Pa): (W)	42	55	68	87	108	142	174	210	253
Max noise : dB (A)	42	44	46	47	49	50	52	54	56
Length : (mm)	790	940	1100	1140	1290	1490	1610	1960	1960
Height : (mm)	640	640	640	640	640	640	640	640	640
Weight : (kg)	24	26	31	36	40	46	55	66	75
PRICE WITHOUT VAT :	381 €	427 €	487 €	503 €	554 €	708 €	786 €	846 €	975 €

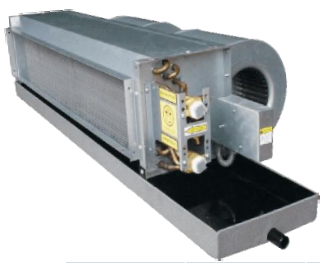
(1) Cooling measurement conditions: Air inlet temperature (DB) 27 °C / WB 19,5 °C, inlet/outlet cold water temperature 7 °C / 12 °C

(2) Heating measurement conditions: Air inlet temperature (DB) 21 °C, inlet hot water temperature 60 °C



Additional digital controller with thermostat "Limit" in which must be added
Net price: 25 €





Fan coils ceiling horizontal concealed type/high static pressure type

	Model	Capacity Cooling - Heating (kW)	Max Air flow (m3/h)	Noise dB (A)	Dimensions (L x W x H) Mm	Max fan power (W)	Weight (kg)	PRICE WITHOUT VAT
TWO-PIPE SYSTEM	FP34 WA	2,17 / 3,49	340	34-42	580*500*235	49	24	206 €
	FP51 WA	3,12 / 5,01	510	35-44	730*500*235	66	26	251 €
	FP68 WA	4,09 / 6,73	680	38-46	780*500*235	84	31	272 €
	FP85 WA	4,75 / 7,62	850	42-47	880*500*235	100	36	292 €
	FP102 WA	6,07 / 9,76	1 020	43-49	1080*500*235	118	40	317 €
	FP136 WA	8,21 / 13,18	1 360	44-50	1230*500*235	174	46	429 €
	FP170 WA	9,38 / 14,81	1 700	46-52	1430*500*235	210	55	465 €
	FP204 WA	11,65 / 18,03	2040	48-54	1530*500*235	250	66	531 €
	FP238 WA	12,49 / 19,7	2380	49-56	1530*500*235	300	75	605 €
FOUR-PIPE SYSTEM	FP51 WA4	3,12 / 5,01	510	35-44	730*500*235	66	26	351 €
	FP68 WA4	4,09 / 6,73	680	38-46	780*500*235	84	31	372 €
	FP85 WA4	4,75 / 7,62	850	42-47	880*500*235	100	36	392 €
HIGH STATIC	FC 13 WM	10,81 / 16,13	2180	49-52	1380*610*345	625	41	1.197 €
	FC 15 WM	12,65 / 18,97	2570	51-55	1480*610*345	725	46	1.260 €
	FC 19 WM	14,66 / 21,99	3250	53-56	1380*660*445	876	52	1.520 €
	FC 25 WM	19,21 / 28,82	4350	61-64	1780*660*445	1063	65	2.121 €
	FC 32 WM	25,74 / 38,61	5440	61-64	1980*660*445	1892	80	2.520 €
	FC 38 WM	29,32 / 43,98	6540	62-65	2180*660*445	1760	88	2.919 €

(1) Cooling measurement conditions: Air inlet temperature (DB) 27 °C / WB 19,5 °C, inlet/outlet cold water temperature 7 °C / 12 °C

(2) Heating measurement conditions: Air inlet temperature (DB) 21 °C, inlet hot water temperature 60 °C

*Controller not included



Fan coils 4-way cassette type

Model	Capacity Cooling - Heating (kW)	Max Air flow (m3/h)	Dimensions (L x W x H) mm	PRICE WITHOUT VAT
FCU 68Ca	3,6 / 5,4	680	593*593*270	708 €
FCU102Ca	5,4 / 8,1	1020	752*752*293	841 €
FCU 136Ca	7,2 / 10,8	1360	822*822*243	904 €
FCU 170Ca	9,0 / 13,5	1700	822*822*290	978 €
FCU 204Ca	10,8 / 16,2	2040	822*822*290	1030 €
FCU 238Ca	12,6 / 18,9	2380	822*822*236	1071 €

(1) Cooling measurement conditions: Air inlet temperature (DB) 27 °C / WB 19,5 °C, inlet/outlet cold water temperature 7 °C / 12 °C

(2) Heating measurement conditions: Air inlet temperature (DB) 21 °C, inlet hot water temperature 60 °C

*Wireless controller included
(wall controller by arrangement)



MECO SLIM LINE

With an elegant design and a thickness only of 129mm, MECO series is suitable for such an elegant interior place.

buygreen

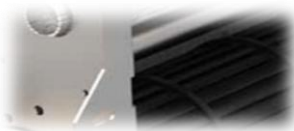


MODEL	Heating capacity (W) max / min	Cooling capacity (W) max / min	Air flow (m3/h) max / min	Noise dB (A) min / max	Dimensions L x W x H (mm)	Weight (kg)	PRICE WITHOUT VAT
MFP-20CM	1600 / 830	1000 / 650	200/100	19/39	700*129*681	16	515 €
MFP-30CM	2900 / 1520	1800 / 1170	300/160	19/40	900*129*681	22	615 €
MFP-40CM	3850 / 2000	2400 / 1560	400/230	19/41	1100*129*681	28	685 €
MFP-50CM	4800 / 2500	3000 / 1950	500/290	21/42	1300*129*681	34	760 €
MFP-60CM	5750 / 2990	3600 / 2340	600/340	19/41	1500*129*681	28	840 €

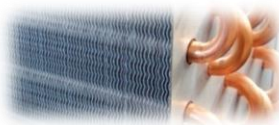
(1) Heating operation: Inlet/outlet hot water temperature 70 °C / 60 °C and inlet air temperature (DB) 20 °C

(2) Cooling operation: Inlet/outlet cold water temperature 7 °C / 12 °C and inlet air temperature (DB / WB) 27 °C / 19 °C.

Tangential fan



Aluminum heat exchanger



Electric motor



Elegant floor bases



MECO SLIM LINE

Control panel



Unico

Elegant design with thickness 130mm, silent operation, ideal for installation in home. It has also touch screen control panel and 3-way solenoid valve.



DC INVERTER

MODEL	Heating capacity (W)	Cooling capacity (W) Total / Felt	Air flow (m3/h) Max / Min	Noise dB (A) Min / Max	Dimensions L x W x H (mm)	Water flow (l/h)	PRICE WITHOUT VAT
BM 200DC	990 / 1550	750 / 610	160/50	19,8/39	694*130*580	142	440 €
BM 400DC	2000 / 3100	1500 / 1250	320/150	18,3/40	894*130*580	302	555 €
BM 600DC	2800 / 4600	2200 / 1900	460/200	19,1/42	1094*130*580	453	640 €
BM 800DC	4200 / 6300	3000 / 2600	580/300	21/42,1	1294*130*580	573	730 €

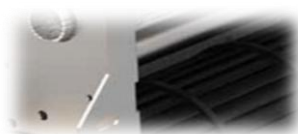
PRICE (without vat) TOUCH SCREEN CONTROL PANEL: 100 €

PRICE (without vat) 3-WAY SOLENOID VALVE: 80 €

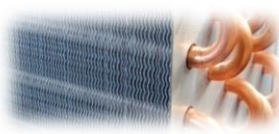
(1) Heating operation: Inlet/outlet hot water temperature 70 °C / 60 °C and inlet air temperature (DB) 20 °C

(2) Cooling operation: Inlet/outlet cold water temperature 7 °C / 12 °C and inlet air temperature (DB / WB) 27 °C / 19 °C.

Tangential fan



Aluminum heat exchanger



DC Inverter Motor



Elegant floor bases



Unico

SLIM Fan Coil

Touch Screen control panel



HEAT PUMPS



Heat pumps air-water offer domestic hot water (DHW), underfloor heating/cooling, also heating/cooling with Fan Coils and heating via radiators type panels. Heat pumps of series PALM are technology INVERTER and construction type MonoBlock. They have compensation (second set point for heating) and resistance control for additional production DHW and protection from legionella.

MODELS AH-AC : TYPE MONOBLOCK INVERTER 60°C (9KW - 25KW)

MODEL	Heating A7 / W35°C		Heating A2 / W45°C		Heating A20 / W35°C		Cooling A35/W17°C	
	Heating capacity (Kw)	Power input (Kw)	Heating capacity (Kw)	Power input (Kw)	Heating capacity (Kw)	Power input (Kw)	Cooling capacity (Kw)	Power input (Kw)
AH-09AC-410C	7,8	1,7	7,1	2,31	9,7	1,96	9,2	2,75
AH-11AC-410C	10,3	2,5	8,8	2,86	13,2	2,69	10,7	3,2
AH-16AC-410C	15,5	3,44	12,4	4,21	19,9	4,1	15,7	4,5
AH-17AC-410C	16,78	3,97	14,15	4,37	22,78	4,4	17,1	4,98
AH-25C-410C	25,7	5,38	21,1	6,2	33,3	5,2	23,1	5,82

MODEL	Power supply V / Ph / Hz	Dimensions L / W / H	Range running temperature (°C)	Max operating current (A)	Refrigerant	Max outlet water temperature	PRICE WITHOUT VAT
AH-09AC-410C	230 /1/50	1091x780x412	-25 ~ +40	12	R410A	60 (°C)	4.400 €
AH-11AC-410C	230 /1/50	1091x880x412	-25 ~ +40	15	R410A	60 (°C)	5.300 €
AH-16AC-410C	230 /1/50	1115x1280x425	-25 ~ +40	25	R410A	60 (°C)	7.600 €
AH-17AC-410C	380 /3/50	1272x1090x462	-25 ~ +43	3 x 10	R410A	60 (°C)	8.500 €
AH-25C-410C	380 /3/50	1272x1640x560	-25 ~ +43	3 x 15	R410A	60 (°C)	10.800 €

GEOTHERMAL HEAT PUMP CLOSE LOOP SYSTEM **MODELS GH**



DESCRIPTION	MODELS	
	GH - 17R	GH - 30
Heating capacity - A10°/ W35°C / KW	16,8	30,00
Power input - 10°C / W35°C / KW	4,3	6,10
COP EN 14511 - A10°/ W35°C	3,9	4,92
Heating capacity - A0°/ W35°C / KW	13,4	25,40
Power input - A0°/ W35°C / KW	3,3	5,80
COP EN 14511 - A0°/ W35°C	4,1	4,38
Cooling capacity - A10°/ W35°C / KW	16,6	30,50
Power input - A10°/ W35°C / KW	4,5	6,20
EER EN 14511 - A10°/ W35°C	3,7	4,92
Max outlet water temperature (°C):	70°C	60°C
Power supply V / ph / Hz:	220 / 1 / 50	380 / 3 / 50
Refrigerant:	R410a	R410a
Noise dB(A):	32,0	36,0
Dimensions L / W / H:	650 x 960 x 400	760x1040x560
Weight (kg):	125,0	215,0
PRICE WITHOUT VAT:	7.600 €	11.025 €



PALM ENERGY DHW water-cooled heat pumps are reversible units for all over the year in any operation mode: single cycle (air conditioning, heating, DWH), as well as combined cycle with full heat recovery (DHW and cooling).

Energy efficiency is higher in summer, when due to full heat recovery, the heating of the water is FREE. In combined operation, the DHW heat exchanger uses the temperature of the injected gases to reach the water temperature up to 60 °C.

GEOTHERMAL HEAT PUMP OPEN LOOP SYSTEM **MODELS OH**



DESCRIPTION	MODELS	
	OH 15	OH 18S
Heating capacity - A10°/ W35°C / KW	14,5	17,90
Power input - 10°C / W35°C / KW	3,4	4,00
COP EN 14511 - A10°/ W35°C	4,4	4,47
Heating capacity - A0°/ W35°C / KW	12,2	14,50
Power input - A0°/ W35°C / KW	3,1	3,48
COP EN 14511 - A0°/ W35°C	3,9	4,16
Cooling capacity - A10°/ W35°C / KW	15,1	18,25
Power input - A10°/ W35°C / KW	3,7	4,51
EER EN 14511 - A10°/ W35°C	4,1	4,08
Max outlet water temperature (°C):	70°C	60°C
Power supply V / ph / Hz:	220 / 1 / 50	380 / 3 / 50
Refrigerant:	R410a	R410a
Noise dB(A):	31,0	31,0
Dimensions L / W / H:	720 x 1010 x 400	760x1040x560
Weight (kg):	125,0	181,0
PRICE WITHOUT VAT:	7.335 €	8.640 €



PALM ENERGY DHW water-cooled heat pumps are reversible units for all over the year in any operation mode: single cycle (air conditioning, heating, DWH), as well as combined cycle with full heat recovery (DHW and cooling).

Energy efficiency is higher in summer, when due to full heat recovery, the heating of the water is FREE. In combined operation, the DHW heat exchanger uses the temperature of the injected gases to reach the water temperature up to 60 °C.

Heat pump for swimming pools



MODELS SBR

Heat pump aerothermal that produces cooling-heating with the help of the freon water heat exchanger. With refrigerant R410 and SANYO compressor. The heat exchanger is titanium, which is not corroded by pool chemicals, high concentration of salts and chlorine. Connection to an existing pool system is easy and fast.



Model SBR	Heating A24-19 / W27°C		Operating current heating (A)	Power supply V / ph. / Hz	Dimensions L / W / H	PRICE WITHOUT VAT
	Heating capacity (Kw)	Power input (Kw)				
SBR 3.8 H-B	3,8	0,79	3,6	220 / 1 / 50	935X360X520	1.540 €
SBR 5.3 H-B	5,3	1,08	5	220 / 1 / 50	935X360X520	1.750 €
SBR 9.5 H-B	9,5	1,9	8,8	220 / 1 / 50	935X360X520	3.770 €
SBR 12.5 H-B	13,4	2,6	12,3	220 / 1 / 50	1010X370X585	4.000 €
SBR 17.0 H-B	18,0	3,6	16,7	230 / 1 / 50 380 / 3 / 50	1115X470X690	5.500 €
SBR 26.0 H-A-S	28,0	5,4	8,4 x 3	380 / 3 / 50	1115X470X1250	7.100 €
SBR 50.0 H-A-S	50,0	10,3	16,6 x 3	380 / 3 / 50	1450X710X1060	15.500 €
SBR 70.0 H-A-S	70,0	16,3	24,7 x 3	380 / 3 / 50	2037X1037X1360	19.500 €
SBR 90.0 H-A-S	90,0	18,4	35 x 3	380 / 3 / 50	2000X1100X1963	28.000 €
SBR 120.0 H-A-S	120,0	25,0	42,2 x 3	380 / 3 / 50	2263X1103X1902	37.000 €

Measurement conditions:

Outdoor temperature 19°C and inlet water temperature 27°C

Heat pump Monoblock low ambient temperature (EVI technology)



MODELS SWBH



Heating and DHW in one. Compensation (second set point for heating) function. Option to connect with solar panels for production of DHW. High temperature heating system up to 85°C, reliable operation even low ambient temperature -25°C, due to anti-frost protection.



► HEAT PUMP AIR-WATER / 85 °C / EVI / HEATING AND DHW / (8,5 - 26,0 KW)

Model SWBH (EVI)	Heating A7/W35°C		Power supply V / ph / Hz	Dimensions L / W / H	PRICE WITHOUT VAT
	Heating capacity (Kw)	Power input (Kw)			
SWBH 8,5 H-B/ (EVI)	8,0	2,2	230 /1/50	1170 x 470 x 685	4.400 €
SWBH 15.0 HB/P (EVI)	15,0	4,0	380 /3/50	1300 x 500 x 1370	8.500 €

* Models marked with "P" included the circulator

Heat pump Monoblock high temperature (up to 85°C)



MODELS SWBH



Heating with radiators panel up to 80°C. Additional DHW production for high temperature applications in slaughterhouses, cheeses factories, etc.



► HEAT PUMP AIR-WATER / 85 °C / HEATING AND DHW

Model SWBH	Heating A7/W35°C		Power supply V / ph / Hz	Dimensions L / W / H	PRICE WITHOUT VAT
	Heating Capacity (Kw)	Power input (Kw)			
SWBH 13.0	13,0	2,9	230 / 1 / 50 380 / 3 / 50	810 x 860 x 1055	6.300 €
SWBH 26.0	26,0	6,19	380 /3/50	1430 x 800 x 1600	12.300 €

Heat pump for DHW & heating (up to 65°C)



MODELS SWBC



Heat pumps ECOPLUS series SWBC are extremely easy to install and allow a perfect combination with boilers and solar panels in system of production DHW. They also have compensation (second set point for heating) control.



► HEAT PUMP AIR-WATER / 65°C / HEATING AND DHW (3,0 - 19,5 KW)

Model SWBC	Heating A7/W35°C		Power supply V / ph / Hz	Dimensions L / W / H	PRICE WITHOUT VAT
	Heating capacity (KW)	Power input (KW)			
SWBC 3.0H-B/P	3,0	0,8	230 /1/50	635X530X447	1.600 €
SWBC 5.6H-B/P	5,6	1,4	230 /1/50	935X360X520	2.350 €
SWBC 9.5H-B/P	9,5	2,4	230 /1/50	1010X370X585	3.150 €
SWBC 13.5H-B	13,5	3,4	230 /1/50	1115X470X687	4.450 €
SWBC 19.5H-B	19,5	4,9	380 /3/50	1150X470X1250	6.500 €
SWBC 24.0 H-A-S	24,0	6,7	380 /3/50	810X780X960	8.000 €
SWBC 40.0 H-A-S	40,0	9,8	380 /3/50	1450X710X1060	11.000 €
SWBC 90.0 H-A-S	90,0	23	380 /3/50	2000X1100X176 3	22.000 €

* Models marked with "P" included the circulator.

Heat pump cooling/heating with recovery hot water up to 55°C



MODELS SWBB



Heat pump ECOPLUS series **SWBB** is extremely efficiently for operation all over the year in any function: single (cooling, heating, DWH) and in combination with heat recovery (DWH and cooling). Energy efficiency is higher during the summer, when the production of DHW is free, due to heat recovery. In combined operation, the DHW heat exchanger use the temperature of the injected gases to heat the water up to 55 ° C. Finally they have compensation (second set point for heating) control.



Model SWBB	Heating A7/W35°C		Cooling A35/W7°C		Power supply V / ph / Hz	Dimensions L / W / H	PRICE WITHOUT VAT
	Heating capacity (Kw)	Power input (Kw)	Cooling capacity (Kw)	Power input (Kw)			
SWBB 8.5B/P	8,5	2,34	8,2	2,7	230 / 1 / 50	935X470X1115	4.000 €
SWBB 13.5H-B/P	13,5	3,7	13,0	4,1	230 / 1 / 50	1115X470X1250	6.100 €
SWBB 13.5H-B/P-S	13,5	3,7	13,0	4,1	380 / 3 / 50	1115X470X1250	6.100 €
SWBB19.5H-B/P-S	19,5	5,4	18,0	5,5	380 / 3 / 50	1115X470X1250	7.200 €

* Models marked with "P" included the circulator

Heat pump cooling/heating with recovery hot water up to 55°C



MODELS SWBB



Heat pump ECOPLUS series **SWBB** is extremely efficiently for operation all over the year in any function: single (cooling, heating, DWH) and in combination with heat recovery (DWH and cooling). Energy efficiency is higher during the summer, when the production of DHW is free, due to heat recovery. In combined operation, the DHW heat exchanger use the temperature of the injected gases to heat the water up to 55 ° C. Finally they have compensation (second set point for heating) control.



Model SWBB	Heating A7/W35°C		Cooling A35/W7°C		Power supply V / ph / Hz	Dimensions L / W / H	PRICE WITHOUT VAT
	Heating capacity (Kw)	Power input (Kw)	Cooling capacity (Kw)	Power input (Kw)			
SWBB 26.0H-A/P-S	27,50	8,1	28.5	9.1	380 /3/50	1450X710X1060	8.900 €
SWBB 29.0 H-A/P-S	29,00	7,8	27,0	6,8	380 /3/50	1450X710X1060	10.000 €
SWBB 38.0 H-A/P-S	38,00	9,9	30,0	10,5	380 /3/50	1450X710X1260	12.200 €
SWBB 60.0H-A-S	60,00	18,8	50,0	20,8	380 /3/50	2037X1360X1037	18.440 €
SWBB 89.0 H-A-S	89,00	24	84,0	28,0	380 /3/50	2000 x 1100 x 1903	24.000 €

* Models marked with "P" included the circulator

DC Inverter R32 Heat pump cooling/heating hot water up to 60°C



ECO PLUS GT-SKR INVERTER



Our R32 DC inverter air to water heat pump is a solution which uses DC inverter technology to heat, cool and to produce domestic hot water. It does not only satisfy house heating requirements, but also supplies domestic hot water. The outlet water temperature is up to 60 °C for radiator and domestic hot water applications, making hot water readily available. Besides, it can provide you a cooler environment in a hot summer. You will enjoy a comfortable life at your home all year round with one device.



Model	Heating A7/W35°C		Cooling A35/W7°C		Power supply V / ph. / Hz	Dimensions П / В / Y	PRICE WITHOUT T VAT
	Heating capacity (Kw)	Power input (Kw)	Cooling capacity (Kw)	Power input (Kw)			
GT-SKR 040 M32 (M)	13.00 (6.05~14.30)	2.97 (1.51~3.52)	10.20 (5.61~13.26)	3.64 (2.18~5.28)	230~240/1/50	1115X470X1020	6.300 €
GT-SKR 050 M32 (M)	17.00 (8.60~20.30)	3.86 (1.91-4.45)	12.90 (7.10~18.7)	4.45 (2.67~6.45)	230~240/3/50	1165X470X1280	7.220 €
GT-SKR 050 M32 (T)	17.00 (8.60~20.30)	3.86 (1.91-4.45)	12.90 (7.10~18.7)	4.45 (2.67~6.45)	380~415/3/50	1165X470X1280	7.220 €
GT-SKR 040 S32 (M)Split	13.00 (6.05~14.30)	2.97 (1.51~3.52)	10.20 (5.61~13.26)	3.64 (2.18~5.28)	230~240/1/50	1115X470X1020	6.675 €
GT-SKR 050 S32 Split(M)	17.00 (8.60~20.30)	3.86 (1.91-4.45)	12.90 (7.10~18.7)	4.45 (2.67~6.45)	230~240/3/50	1165X470X1280	7.560€

*(M) = Single Phase , (T) = Three-Phase

Dc Inverter Heat Pump Features:

- Full inverter technology
- R32 refrigerant
- MITSUBISHI inverter compressor
- SWEP plate heat exchanger
- ERP A+++
- For heating, cooling and DHW
- Smart Wi-Fi control
- Pre-set selection of the appropriate climate curve
- Low running noise



Winter heating



Summer air conditioning



Domestic hot water





SWIMMING POOL HEAT PUMP (INDOOR)



MODEL		SBR-9.0H-A	
Rated Heating Capacity	W	9200	
	BTU/h	31400	
Rated Cooling Capacity	W	4170	
	BTU/h	14200	
Heating Range	°C	20 ~ 40	
Cooling Range	°C	8 ~ 28	
Heating Input Power	W	1700	
Cooling Input Power	W	2130	
Running Current Heating	A	7.95	
Running Current Cooling	A	10.0	
COP	W/W	5.4	
EER	W/W	1.9	
Power Supply	V/PH/Hz	220/1/50	
Compressor Type		Rotary	
Noise	dB(A)	52	
Water Connections	inch	1-1/2"	
Water Flow Volume	m ³ /h	2.7-4	
Water Pressure Drop	Kpa	15	
Unit Dimension	L	mm	807
	W		730
	H		640
Packing Dimension	L	mm	860
	W		770
	H		680
Weight	Net Weight	Kg	86
	Gross Weight		92

ECO PLUS SBR-9.0

Our **ECO PLUS** SBR-9.0 indoor pool heat pump comes to solve the aesthetic problem created by other conventional outdoor pool heat pumps that are difficult to cover.



PRICE WITHOUT VAT

3.950€

*Measurement conditions: outdoor air temp:24°C/19°C, inlet water temp:27°C

HEAT PUMP FOR JACUZZI AND MINI POOLS



MODEL SBR

Heat pump from ECOPLUS suitable for Jacuzzi and mini pools. Flexible installation and connection due to small volume, with titanium heat exchanger and refrigerant R-32.



Model SBR	Heating A7-19 / W26°C		Operating current heating (A)	Power supply V / ph / Hz	Dimensions L / W / H	PRICE WITHOUT VAT
	Heating capacity (Kw)	Power input (Kw)				
SBR – 1,5 006S	2,1	0,78	3,6	220 / 1 / 50	360X360X475	1.400 €

Aerothermal heat pump ECOPLUS series ZR9W which produces DHW with the help of freon water exchanger (stainless steel). It has built-in stainless steel boiler, suitable for storing DHW.

MODEL	ZR9W-200T	ZR9W-250T	ZR9W-300T
Heating capacity 0°C / +43°C / KW :	3,0	3,0	3,0
Power input 0°C / +43°C / KW :	0,9	0,9	0,9
COP 0°C / +43°C / KW :	3,3	3,3	3,3
Power supply :	220/1/50	220/1/50	220/1/50
Max operating current heating (A) :	3,8	3,8	3,8
Compressor / Type / Quantity Toshiba / Scroll / 1 Refrigerant:	R410	Toshiba / Scroll / 1 R410	Toshiba / Scroll / 1 R410
Noise dB(A) :	49	49	49
Duct diameter (mm) :	Ø150 INOX	Ø150 INOX	Ø150 INOX
Water connection (inch) :	¾"	¾"	¾"
Water tank volume (lt) :	200	250	300
Production DHW (lt/h) :	70	70	70
Max hot water outlet temperature (°C) :	60	60	60
Range running temperature (°C) :	0°C ~ 43°C	0°C ~ 43°C	0°C ~ 43°C
Weight (kg) :	90	100	110
DIMENSIONS: Diameter * Height (mm) :	Ø560*1720	Ø640*1610	Ø640*1610
PRICE WITHOUT VAT :	2.880 €	3.000 €	3.200 €



Heat pumps ECOPLUS series **ZR9W** have effective thermal insulation, protection from corrosion, antibacterial function and are easy to install. They use environmentally friendly and safe refrigerant,, R410A.

Heat pump has electronic control, operates autonomous at low noise levels 45dB (A), maintaining the temperature up to 60 °C. If it is necessary, an additional electric resistance of 1.500W is used for heating to higher temperature.

That is, consuming 1 kW of electricity, the boiler produce 3,3 kW of heat, which makes it extremely profitable compared to conventional electric heaters.



INVERPAD TECHNOLOGY

InverPad is a revolutionary technology created by Aquark Electric Limited. It perfectly combines unique Pad appearance, Stepless DC Inverter and noise cancelling technology together.



MAIN FEATURES:

- Stepless DC Inverter pool heat pump
- Patent slab design
- Round touch controller
- Aluminum-alloy casing
- Down to -10°C operation
- R32/R410A gas
- Wifi APP control
- EEV technology
- Automatic defrost by cycle reversal
- Twisted titanium heat exchanger
- Soft starter

PAD DESIGN: Classic Pad design in aluminum alloy casing offers premium user-friendly experience. With invisible fan, it also brings highly safety for kids.

MODEL	MSC130	MSC170	MSC210	MSC280S	MSC350S
-------	--------	--------	--------	---------	---------

PERFORMANCE CONDITION: Air 27°C / Water 27°C / Humid.80%

Heating capacity (Kw)	13.0	17.5	21.0	28.0	35.2
COP range	14.5 - 7.0	15.6 - 7.0	14.8 - 7.1	15.8 - 7.1	15.5 - 7.0
Average COP at 50% speed	10.5	11.0	11.0	10.8	10.5

PERFORMANCE CONDITION: Air 15°C / Water 26°C / Humid.70%

Heating capacity (Kw)	9.0	12.5	14.5	19.0	24.2
COP range	7.5-5.0	7.7-5.0	7.1-5.0	8.0-5.0	7.5-5.0
Average COP at 50% speed	6.4	6.6	6.6	6.5	6.6

PERFORMANCE CONDITION: Air 35°C / Water 28°C / Humid.80%

Cooling capacity (Kw)	6.3	8.0	10.1	11.9	16.1
-----------------------	-----	-----	------	------	------

TECHNICAL SPECIFICATIONS

Operating air temperature (°C)	-10°C - 43°C				
Compressor	Twin-rotary Mitsubishi DC Compressor				
Casing	Alluminum – alloy Casing				
Heat exchanger	Twisted Titanium Heat Exchanger				
Power supply	230V 1Ph			400V 3Ph	
Rated Input Power (kW)	0.26 - 1.80	0.33 - 2.50	0.38 - 2.90	0.49 - 3.80	0.65 - 4.84
Input Power at 50% speed (kW)	0.70	0.95	1.10	1.46	1.84
Rated Input current (A)	1.13 - 7.83	1.44 - 10.90	1.66 - 12.7	0.71 - 5.51	0.95 - 7.01
Sound Level at 1m dB(A)	40.1 - 48.7	41.1 - 51.8	38.9 - 52.2	41.5 - 52.9	40.6 - 52.6
Sound Level 50% at 1m dB(A)	43.7	44.5	44.4	47.0	46.1
Sound Level at 10m dB(A)	20.1 - 28.7	21.1 - 31.8	18.9 - 32.2	21.5 - 32.9	20.6 - 32.6
Advised Water flux (m3/h)	4 - 6	6 - 8	8 - 10	10 - 12	12 - 18
Water connection (mm)	50				
Net Dimension LxWxH(mm)	890*430*657	1060*430*657	1060*430*757	1060*430*957	1314*512*957
PRICE WITHOUT VAT	4380€	5600€	6750€	8000€	8900€



COOPERATIVE BANK ACCOUNTS

NAME	DATSERIS NIKOLAOS AND SIA OE
ETHNIKI	GR39 0110 4310 0000 4314 4009 339
PIRAEUS	GR20 0172 7560 0057 5605 8737 360
ALPHA BANK	GR36 01406 6906 6900 2002 004 123
EUROBANK	GR54 0260 1670 0006 8020 0288 971

 **AGIOS NIKOLAOS, CRETE**

K.Karamanli 51
2841023150

 **METAMORFOSI, ATHENS**

Artemidos 26
2114056400

 **HERAKLION, CRETE**

Thesi Alona, Karteros
2810381410

 **Mechanical Solutions**

 **Mechanical.Solutions**

 **www.mechanicalsolutions.gr**