



INVERCLEAR

Visible Clear, Invisible Care



Aquark Technology Limited

Web: www.aquark.com

Tel: +86 20 3781 4693

Mail: sales@aquark.com

Address: Keyuan Two Road, Gaoli Development Zone, Ronggui Shunde District, Foshan, P.R.China 528306

SLIMMEST PAD DESIGN

Inheriting the slimmest design, InverClear delights you with space-saving installation and clear data reading about water quality and running capacity on its pad screen. The unique design of responsive indicator lights also helps you master the water state easily by colors.

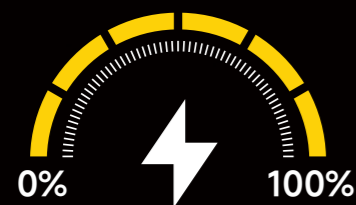


INVERCLEAR

1st Full-Inverter Salt Chlorinator

InverClear adopts an advanced PID algorithm for accurate control of chlorine production and pH regulation. With self adaptation to different situations and 100% powerful inverter, InverClear saves more time whether during initial disinfection or after having a party. It can also operate at a low salt level of 2g/L and keep crystal pure water without worries about frequent salt maintenance.



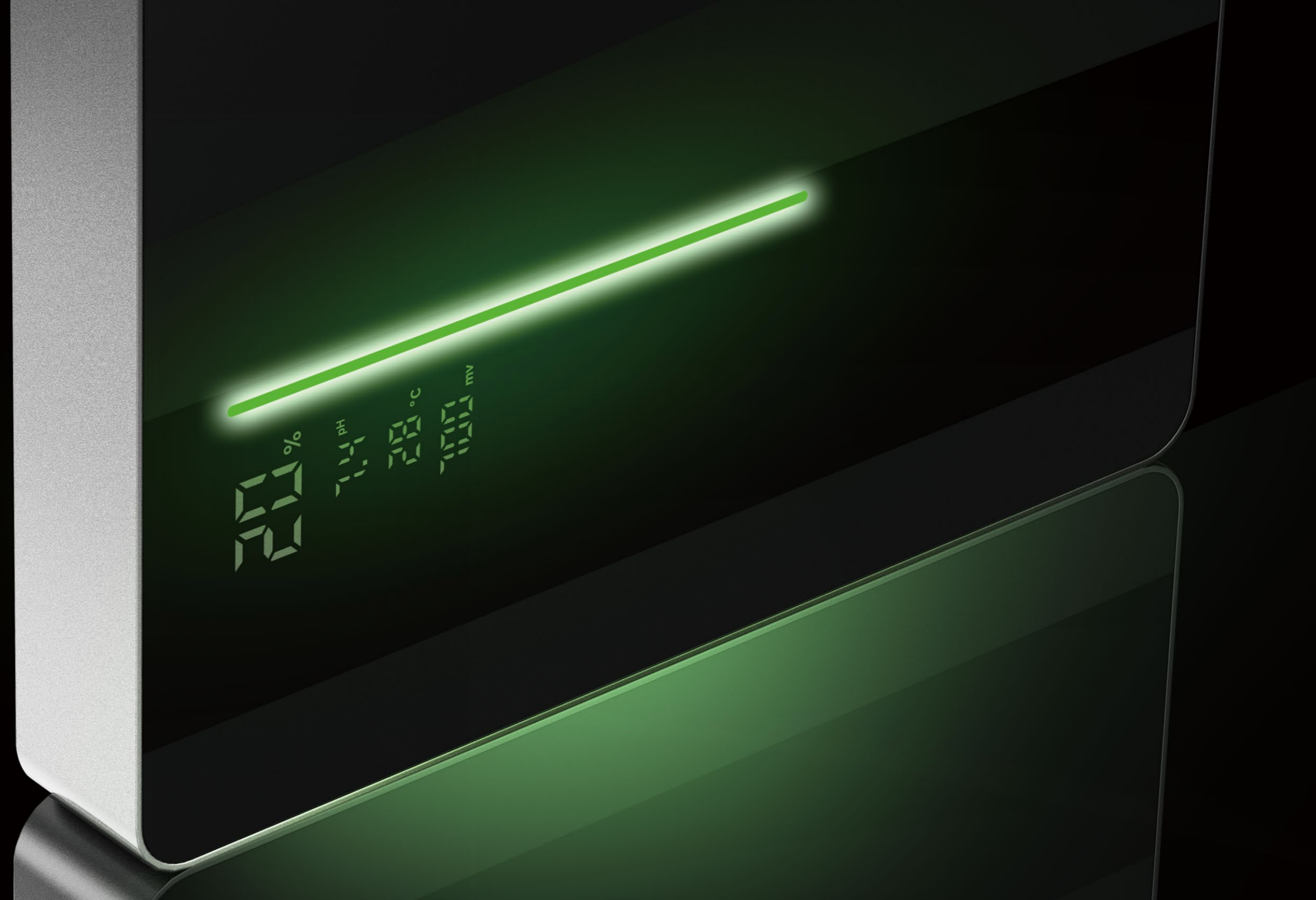


0%-100% Inverter Operation

DYNAMIC CONTROL

Embedded with dynamic inverter control, InverClear is intended to offer triple benefits beyond expectations.

Running adaptively from 0%-100%, the new type features more durable cell life, absolute energy-saving operation, and lasting water quality.



LOW TO 2g/L

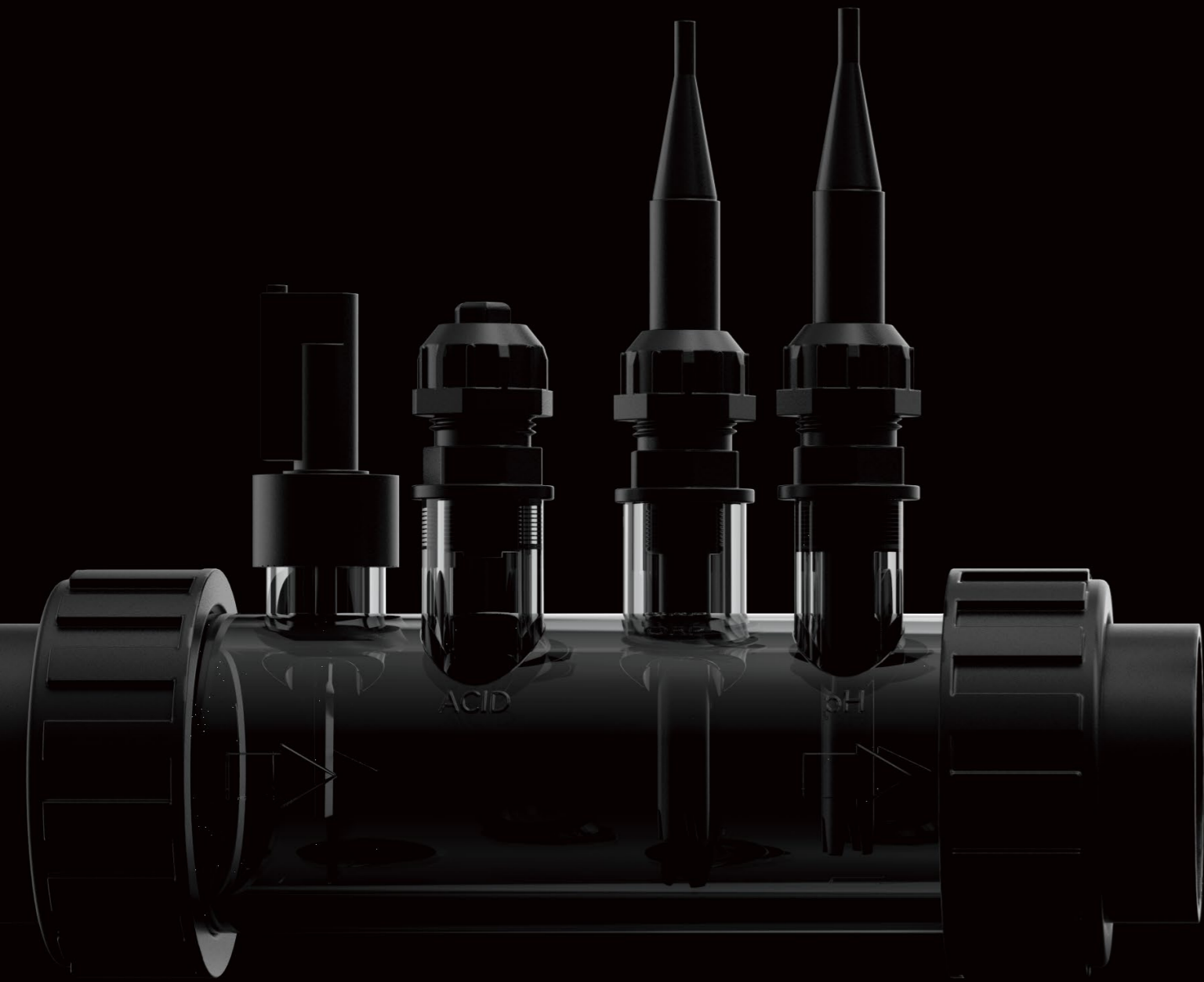
InverClear frees your concerns about swimming in saltwater or forgetting to add salt in time. It can operate even at low salt levels of 2g/L, benefiting both swimmers and pool systems.



VISIBLE WATER QUALITY

'SEE' the real-time water quality on the pad controller easily, even if you have no idea about chemistry.





MODULAR CELL

InverClear's modular cell, with an electrode, acid injector, sensor holder and flow switch, is easy to install.



Inverter Energy Saving

UP TO 1000 KWH SAVING FOR 5 YEARS

Save up to 1000kWh in energy consumption through a 5-year usage, thanks to the durability brought by self-regulating operations under the unique inverter control.









One-Click Simplicity

APP CONTROL

One more pad screen to keep you well informed of the real-time water reports

-  ORP/pH/Temperature Reading
-  One-click Turbo/Boost
-  Salinity Reference
-  Logs Review



MORE FEATURES



Salinity Detection



Replaceable Electrode



Self-cleaning Cell



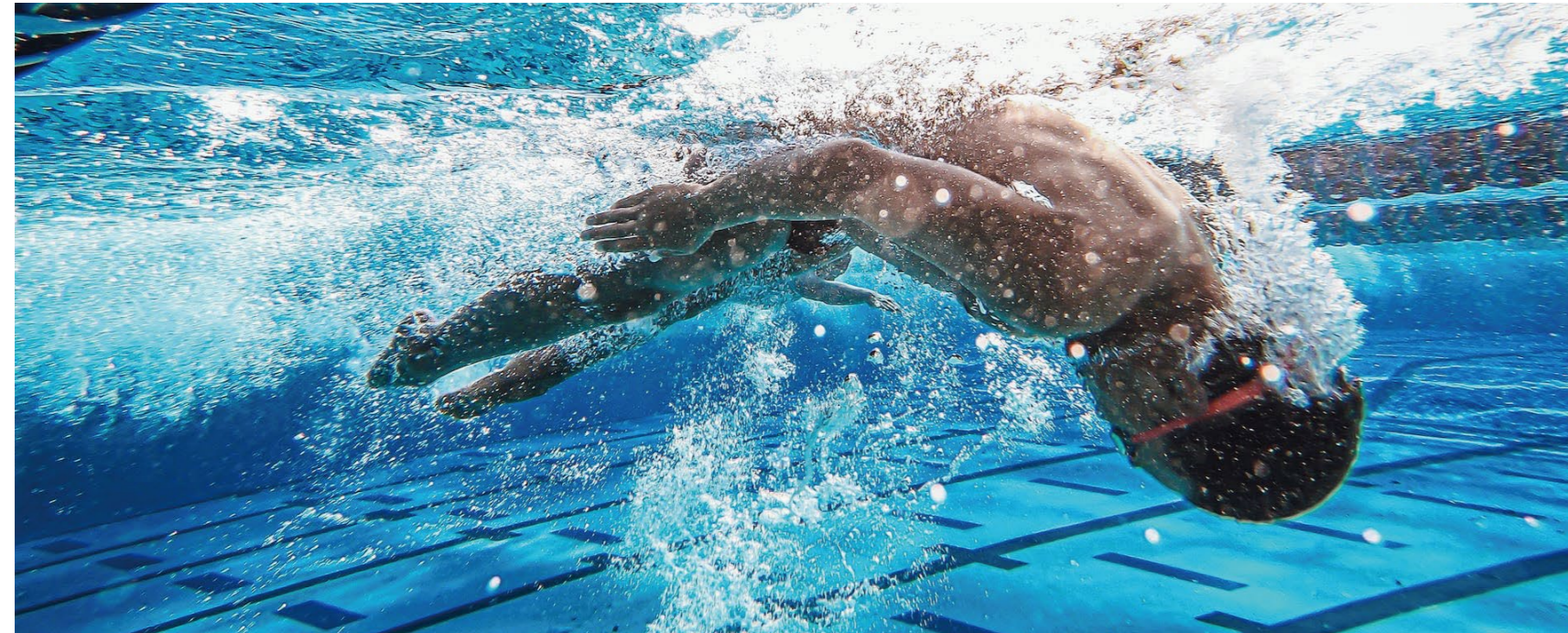
Pump Control



Build-in pH Regulator



Auto Low Mode



PARAMETERS OF INVERCLEAR

Model	ICS10	ICS16	ICS22	ICS28
Production (g/h, 3000PPM)	10.0	16.0	22.0	28.0
Salt Level (g/L)	2 ~ 5 (recommended 3g/L)			
Advised pool volume (m3) *	20-45	35-75	40-100	50-120
TECHNICAL SPECIFICATIONS				
Advised water flux (m³/h)	5 ~ 18			
Power Supply	100-240V 50/60Hz			
Power Consumption (W)	60	85	110	130
Operating Temperature (°C)	-5°C ~ 42°C			
Salinity Test	Salt Level Detection (accuracy ±500PPM)			
Self-cleaning	Default 4h, 3 options in total (2/4/6h)			
Dosing Pump	Built-in/Integrated			
Communications	MODBUS RS485 / Wi-Fi / Dry Contact			
Control Unit Dimension LxWxH (mm)	202 x 270 x 75			
ELECTROLYSIS CELL				
Water connection (mm)	63/50			
Electrodes	10 titanium plates			
Water Temperature	10°C ~ 40°C			
Maximum Pressure	3.0 Bar for Probe Cell, 4.5 Bar for Electrolysis Cell			
Cell Life(h)	10000			
PACKAGING SPECIFICATIONS				
Net Weight (kg)	7.3			
Gross Weight (kg)	9			
Packaging Dimension LxWxH (mm)	550 x 400 x 300			
Qty per 20'FT/40'HQ (sets)	364/896			